

Preventive Maintenance

Bring Your Preventive Maintenance Plant to Life with Real-Time Information

Manage Preventive Maintenance as Part of Your MES

The Epicor® Advanced MES preventive maintenance module is a proactive, deliberate approach to maintenance, repair, and overhaul (MRO). It lets you control activities for machines, tools, and auxiliary equipment based on actual runtime, number of cycles, or time so that you eliminate guesswork and conflicts from your maintenance program. If your machines require specific activities at irregular intervals, Advanced MES preventive maintenance is on the front line, keeping track of every cycle and every MRO activity you set, which eliminates checklists, paper shuffling, and neglected maintenance activities.

Most equipment comes with use and care recommendations, but your shop probably doesn't run within that narrow framework. A routine schedule may not take into account actual use and wear. As a result, maintenance engineers and planners often struggle to accurately plan MRO activities.

Since the production environment is dynamic, with conditions and plans constantly changing, you look to Epicor Advanced MES to keep things running smoothly. The MES system's preventive maintenance module orchestrates MRO activity with production, with the common goal of maximizing uptime



Advanced MES

Benefits

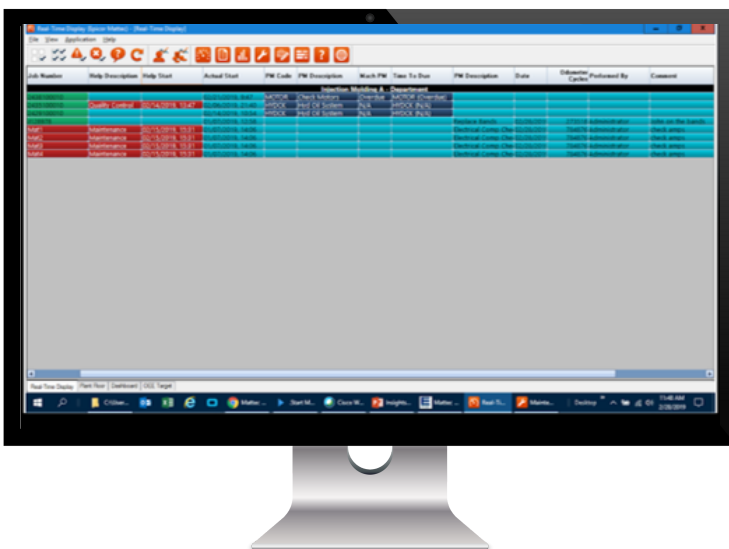
Enable preventive maintenance programs

Help improve equipment reliability and boost longevity

Avoid production / maintenance scheduling conflicts

Help prevent costly machine repairs and unplanned downtime

Conduct maintenance activities with precision



and minimizing downtime. The same real-time data that fuels the schedule, real-time views, and other core MES elements also feeds precise information about the actual machine, tool, and auxiliary equipment use. The result—reliability and maintenance engineers armed for greater contributions to margins and on-time delivery.

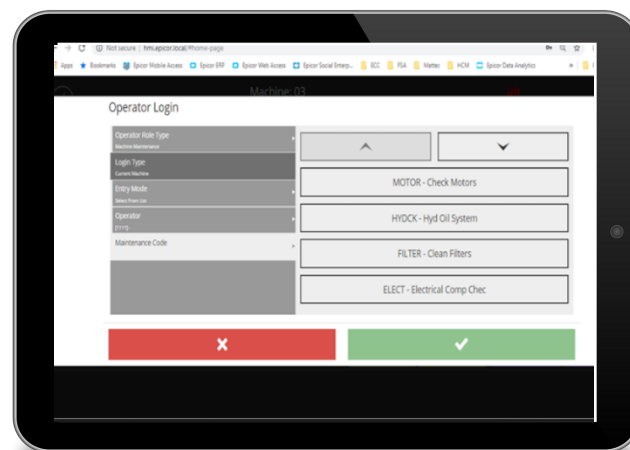
Transform Preventive Maintenance from Routine and Reactive to Proactive and Deliberate

Condition planning can help to minimize costly repairs and extend the life of assets. You make the rules and Advanced MES alerts your team to take action. Advanced MES's preventive maintenance module lets you define and automatically initiate activities based on runtime, number of cycles, time, or any combination of these criteria. Every rule automatically sends a maintenance activity to the production schedule when the conditions are met, which eliminates needless maintenance activity and conserves precious resources.

- Handles MRO activities like cleaning, changing parts, taking measurements, making adjustments, performing inspections, and others
- Adjusts production schedule automatically for PM/MRO
- Suitable for machines, tools, auxiliary equipment, and other types of assets
- Accepts tasks, schedules, and requirements from ERP, MRP, and other maintenance systems

Every time a maintenance event flows into the schedule, you can see exactly how it's going to affect production and you have the ability to make schedule choices and adjustments. Operators and maintenance staff get the information they need in real-time, with alerts and notifications consistent with your MES system configuration. Additionally, each scheduled maintenance activity can include instructions and documents specific to the machine and current requirements, served up where the work is going to take place.

When the maintenance tech or engineer arrives at the repair site, the system lets the worker login, log out, and document steps and work completed. Your Advanced MES system keeps track of time and captures all of the data that's critical for future planning and audit



traceability. Preventive maintenance reports—on past, current, and future activities—help you plan for the right people and the right supplies and parts at the right time without wasting dollars on excess parts, supplies, and hours on the schedule. The preventive maintenance module also helps you create resource utilization reports to examine the cost and time required to maintain any specific machine or tool, any category of machine or tool, or even groups of assets based on shift, customer, crew member, or any other dimension.

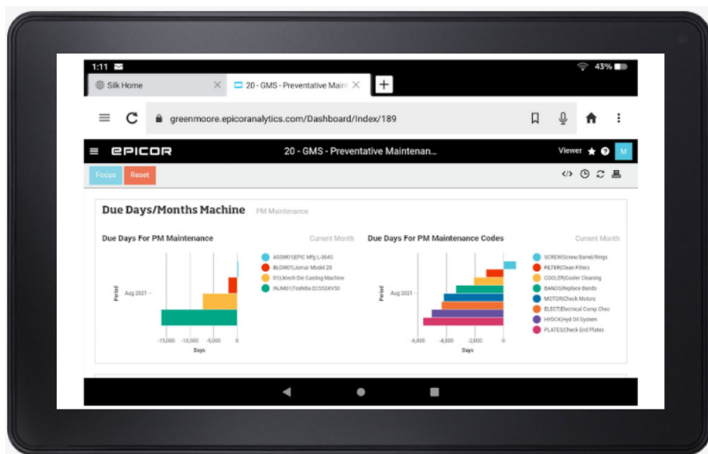
- Delivers on-the-spot maintenance documents and instructions
- Provides MRO cost tracking and visibility against assets, work centers, staff, shifts
- Builds maintenance history with audit trail details—who, what, when, how long
- Includes pre-defined one-click reports and easy report configuration
- Allows escalation rules for past due and incomplete activities
- Allows rules based on runtime, cycles, time, or a combination
- Generate automatic MRO tasks
- Provide, real-time alerts and reports

Supercharge Your Maintenance Deployment with Epicor Data Analytics

Epicor Data Analytics (EDA) is a cloud-based, easy-to-use solution that can quickly contribute to your business while helping you avoid error-prone approaches such as spreadsheets and manual calculations that often waste time and resources. It also stays up-to-date with the daily stored changes of your production trend monitoring.

EDA provides customizable and interactive dashboards to make it easy to analyze the short-term and long-term data trends related to your production equipment. The dashboards provide visual graphs, charts, and tables, so you can quickly review important information about your production performance and make informed strategic decisions. The EDA grid is where you conduct most of your analysis—and unlike a spreadsheet, you can “drill down” into the data with a simple click to reveal additional details.

EDA is a comprehensive end-to-end service delivered and supported by Epicor. It is fully integrated with Advanced MES using your data to provide a broad understanding of your production performance. As a cloud-based service, EDA minimizes costs for your IT head-count and current system hardware, software, and maintenance budgets. Because you are accessing it in the cloud, you will always have the latest and greatest version of EDA.



With EDA, you have responsive mobile access to your data, so you are never disconnected from your information. “Always connected” means you can respond quickly to the needs of your business and keep your operations highly productive.

Use EDA with your maintenance program to help you understand important information like

- Mean-time between failures
- Mean-time to failure
- Mean-time to repair
- Maintenance views



en>compass **EPICOR**
Gold Partner

Encompass Solutions is a business and software consulting firm that specializes in ERP systems, EDI, and Managed Services support for Manufacturers. Serving small and medium-sized businesses since 2001, Encompass has helped modernize operations and automate processes for hundreds of customers across the globe. Whether undertaking full-scale implementation, integration, and renovation of existing systems, Encompass provides a specialized approach to every client’s needs. By identifying customer requirements and addressing them with the right solutions, we ensure our clients are equipped to match the pace of Industry.

Contact Us Today: info@encompass-inc.com | www.encompass-inc.com

The contents of this document are for informational purposes only and are subject to change without notice. Epicor Software Corporation makes no guarantee, representations, or warranties with regard to the enclosed information and specifically disclaims, to the full extent of the law, any applicable implied warranties, such as fitness for a particular purpose, merchantability, satisfactory quality, or reasonable skill and care. The results represented in this testimonial may be unique to the particular customer as each user’s experience will vary. This document and its contents, including the viewpoints, testimonials, dates, and functional content expressed herein are believed to be accurate as of its date of publication, August, 2021. Use of Epicor products and services are subject to a master customer or similar agreement. Usage of the solution(s) described in this document with other Epicor software or third-party products may require the purchase of licenses for such other products. Epicor and the Epicor logo are trademarks or registered trademarks of Epicor Software Corporation in the United States, and in certain other countries and/or the EU. Copyright © 2021 Epicor Software Corporation. All rights reserved.