

Epicor Data Analytics for Advanced MES

Achieving New Levels of Manufacturing Intelligence

Visualizing Operational Data Trends

Your Advanced MES real-time display shows you dashboards for the current shift and current job. But what if you want to capture that data for long-term trending analysis? The solution is Epicor Data Analytics (EDA), powered by Phocas™, which helps manufacturing operations turn their accumulated data into actionable insights. It helps them look beyond the long-term or short-term overall equipment effectiveness (OEE) measures to focus on the specific components—plant, department, machine, shift, part, etc.—that are causing losses to the company.

From the top floor to the shop floor, it's important to know how your business is performing at all times. That's why Epicor built a powerful, out-of-the-box reporting and analytics system that delivers important information in easy-to-digest dials, graphs, and charts.

EDA is a cloud-based, easy-to-use solution that can quickly contribute to your business while helping you avoid error-prone approaches such as spreadsheets and manual calculations that often waste time and resources. It also stays up-to-date with the daily stored changes of your production trend monitoring.



Advanced MES

Benefits

Drive improvements based on data - not opinions

Understand OEE trends and target areas for improvement

Visually spot anomalies, and drill down into transactional detail to find the source

Enable employees to access and tailor visualizations in a self-service capacity

Reduce time wasted gathering and organizing production data

EDA provides customizable and interactive dashboards to make it easy to analyze the short-term and long-term data trends related to your production equipment. The dashboards provide visual graphs, charts, and tables, so you can quickly review important information about your production performance and make informed strategic decisions. The EDA grid is where you conduct most of your analysis—and unlike a spreadsheet, you can “drill down” into the data with a simple click to reveal additional details.

EDA is a comprehensive end-to-end service delivered and supported by Epicor. It is fully integrated with Advanced MES using your data to provide a broad understanding of your production performance. As a cloud-based service, EDA minimizes costs for your IT head-count and current system hardware, software, and maintenance budgets. Because you are accessing it in the cloud, you will always have the latest and greatest version of EDA.

With EDA, you have responsive mobile access to your data, so you are never disconnected from your information. “Always connected” means you can respond quickly to the needs of your business and keep your operations highly productive.

Content Packs

EDA includes an out-of-the-box connection to Advanced MES, which means fast implementation and fast ROI. Without it, your alternative would be to manually connect to the data schema and determine what data to bring into the analytics solution, which could be a daunting, months-long process. Instead, we provide starter dashboards that you can easily clone and modify. You can also choose our extended content packs that are available and you also have the freedom to build onto the content pack with any additional fields from Advanced MES and augment from any other data sources.

Build your own dashboards or take advantage of our prebuilt content packs that include:

- Key performance indicators
- Plant comparisons
- Scrap dashboards
- Downtime dashboards
- Mean-time dashboards
- OEE dashboards
- Availability dashboards
- Performance dashboards
- Mean-time between failures
- Mean-time to failure
- Mean-time to repair
- Schedule views
- Shift production reports
- Tool change views
- Tool requirements views
- Machine parameter views
- Material needs views
- Material used views
- Maintenance views
- Operator metrics
- Top 10 dashboards
- Cavitation efficiency displays
- Cycles out of spec dashboards
- Engineering dashboards
- Help call metrics
- Incident log views
- Utilization metrics
- Job production views
- Machine scoreboards
- Energy usage views

Key Features

Made for Manufacturers

Offers fast implementation

Fast, flexible, and easy to learn

Integrated with Epicor Advanced MES plus other data sources of your choosing

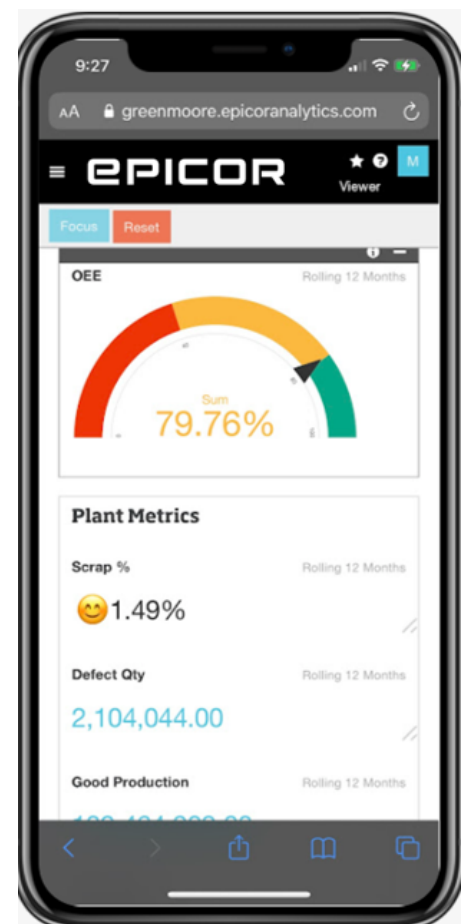
Keeps you connected with mobile access

Delivered as a complete, scalable cloud service - no hardware required

Does not require Advanced MES user licenses

Public internal dashboards feature provides a live display link

Does not require Advanced MES user licenses



User Types

EDA User Function	Standard (Full) Named User	Viewer Named User
Analyze the data behind the charts	◆	
Create a dashboard or favorites	◆	
Export information from a favorite	◆	
Publish public internal dashboards	◆	
Share embedded dashboard views	◆	
Access dashboards shared with the user	◆	
Filter on information on that dashboard and cross-filter the dashboard to that information	◆	◆
Set a dashboard as the user's homepage	◆	◆
Access favorites that have been shared with the user	◆	◆
Sort the favorites by a column	◆	◆
Have favorites scheduled to be delivered via the email assigned to the viewer license	◆	◆
Have security restrictions applied to the user, which allows one dashboard for multiple user	◆	◆

“Growth is now 20% year on year, and we've increased our OEE to 85% with a goal of increasing that to 90% in the next year”

Greg Heeley

Chief Technology Officer - Sistema Plastics

Requirements

Epicor Data Analytics is available for Advanced MES Version 8.2.4 and higher. The lightweight SYNC application and one instance of data are stored on a local server with the majority residing in the cloud. Extra disk space is recommended that is 2.5 to 3 times the disk space of the data being loaded to the cloud. The only items required for subscription purchase are a starter pack of five named users (plus additional named users as desired). The Public Internal Dashboards feature requires a minimum of fifteen

EDA named users. All other necessary components, such as Advanced MES content and the SYNC application are included as well as some Epicor ERP content.



Functions such as Mode, Period, Stream, etc.

The query grid

More functions

	Code	Yield Efficiency	Cycle Efficiency	Downtime Percent	Idle Time Hours	Downtime Percentage with Idle	Run Percentage with Idle	Idle Percentage	Expected Cycle Time	Sum of Cycle Times
TOTAL		79.93%	103.94%	24.95%	0.15	24.94	75.04%	0.01%	14,525	2,039,152.50
1	Cin 01	98.58%	100.69%	0.00%	0.02	0.00	100.00%	0.00%	1,750	651,957.42
2	Cin 02	67.28%	93.48%	27.30%	0.00	27.30	72.70%	0.00%	1,140	771,148.25
3	Cin 09	67.03%	132.63%	49.05%	0.00	49.05	50.95%	0.00%	6,390	616,046.82
4	Cin 03	0.07%	0.00%	0.00%	0.00	0.00	99.98%	0.02%	25	0.00
5	Cin 07	0.00%	0.00%	0.00%	0.13	0.00	0.00%	100.00%	5,220	0.00

en>compass **EPICOR**
Gold Partner

Encompass Solutions is a business and software consulting firm that specializes in ERP systems, EDI, and Managed Services support for Manufacturers. Serving small and medium-sized businesses since 2001, Encompass has helped modernize operations and automate processes for hundreds of customers across the globe. Whether undertaking full-scale implementation, integration, and renovation of existing systems, Encompass provides a specialized approach to every client's needs. By identifying customer requirements and addressing them with the right solutions, we ensure our clients are equipped to match the pace of Industry.

Contact Us Today: info@encompass-inc.com | www.encompass-inc.com

The contents of this document are for informational purposes only and are subject to change without notice. Epicor Software Corporation makes no guarantee, representations, or warranties with regard to the enclosed information and specifically disclaims, to the full extent of the law, any applicable implied warranties, such as fitness for a particular purpose, merchantability, satisfactory quality, or reasonable skill and care. The results represented in this testimonial may be unique to the particular customer as each user's experience will vary. This document and its contents, including the viewpoints, testimonials, dates, and functional content expressed herein are believed to be accurate as of its date of publication, August, 2021. Use of Epicor products and services are subject to a master customer or similar agreement. Usage of the solution(s) described in this document with other Epicor software or third-party products may require the purchase of licenses for such other products. Epicor and the Epicor logo are trademarks or registered trademarks of Epicor Software Corporation in the United States, and in certain other countries and/or the EU. Phocas is a registered trademark of Phocas Software. Copyright © 2021 Epicor Software Corporation. All rights reserved.