

Advanced MES (Mattec) 8.3.3 Customer Release Summary Guide

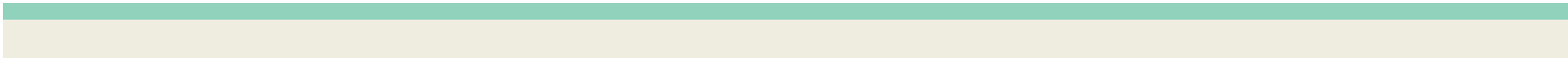
The contents of this document are for informational purposes only and are subject to change without notice. Epicor Software Corporation makes no guarantee, representations, or warranties with regard to the enclosed information and specifically disclaims, to the full extent of the law, any applicable implied warranties, such as fitness for a particular purpose, merchantability, satisfactory quality, or reasonable skill and care. This document and its contents, including the viewpoints, dates, and functional content expressed herein are believed to be accurate as of its date of publication, October 2020. The supply of Epicor products and services is subject to a master customer agreement or similar agreement. Usage of the solution(s) described in this document with other Epicor software or third-party products may require the purchase of licenses for such other products. Epicor, the Epicor logo, other Epicor marks are trademarks or registered trademarks of Epicor Software Corporation in the United States and other countries. Microsoft® SSRS, Microsoft® Windows®, and Microsoft® Internet Explorer®, and are either registered trademarks or trademarks of Microsoft, respectively, in the United States and/or other countries. All other marks are owned by their respective owners. Copyright © 2021 Epicor Software Corporation. All rights reserved.

Forward-Looking Statements

Certain statements in this pre-release guide constitute forward-looking statements including statements regarding the latest product release, release dates, expected future functionality and benefits therefrom, and other statements that are not historical fact. These forward-looking statements are based on currently available competitive, product and economic data together with management's views and assumptions regarding future events and business performance as of the time the statements are made and are subject to risks and uncertainties. Actual results may differ materially from those expressed or implied in the forward-looking statements. As a result of these factors the business or prospects expected by Epicor as part of this release may not occur. Epicor undertakes no obligation to revise or update publicly any forward-looking statements except as required by applicable law.

Table of Contents

Executive Summary	4
New Feature Summary	4
Notes for Downtime	4
Downtime Splitting.....	4
Reclassification of Downtime	4
Moving of Websites	4
Automatic Printer Selection Based on Label Type	5
Automatic Scrap Tracking	5
Scrap Reversal by UID.....	5
New SSRS Reports.....	5
Bug Fix Summary	6
About Epicor	8



Executive Summary

Epicor Advanced MES is a critical part of any Smart Factory. Manufacturers use Advanced MES to improve quality, reduce scrap, help ensure on-time delivery, and boost production throughput. It's all about improving production execution and performance efficiency to gain a competitive advantage. How do you make more without more assets? Use Advanced MES to uncover and eliminate downtime, to make more parts, or cut costs. MES can improve profitability by helping you find more capacity.

Epicor Advanced MES collects data directly from equipment and operators on the shop floor in real-time, minimizing inaccurate and time-consuming manual data collection. With information instantly in your hands, you can anticipate and solve production problems before they happen. Real-time insight helps you pinpoint critical issues, reduce waste, and improve quality and customer service. Everyone in the plant and throughout the business can then take action to improve manufacturing performance.

The latest release of Advanced MES, 8.3.3, introduces several new features.

New Feature Summary

HMI Dynamic Refresh

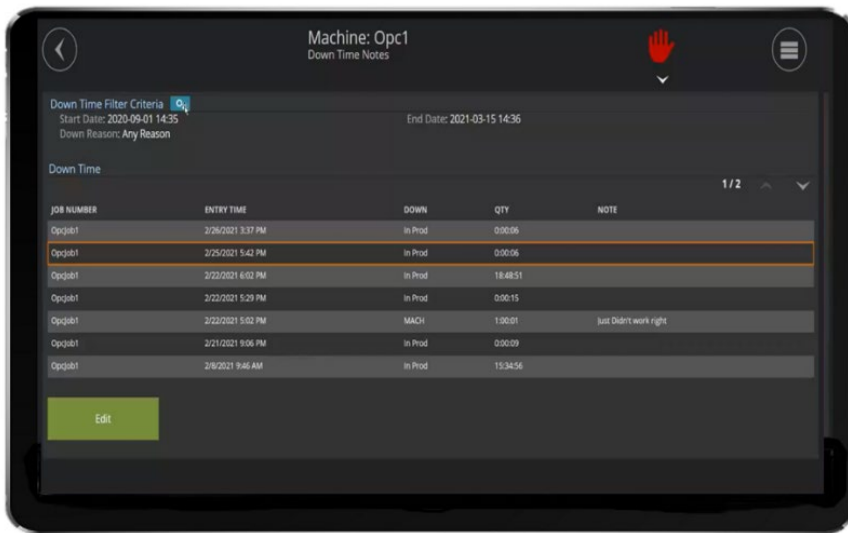
HMI Refresh rate is now dynamic. Historically the refresh rate was set at 60 seconds. In the 8.3.3 release, when there is an important update, such as a machine status change detected, the HMI will reflect this change almost immediately.

Notes for Downtime

Historically Advanced MES has allowed users to track downtime by a down reason. This new enhancement will allow a user to enter notes within the HMI against a downtime instance to provide more details than a simple downtime reason code can provide.



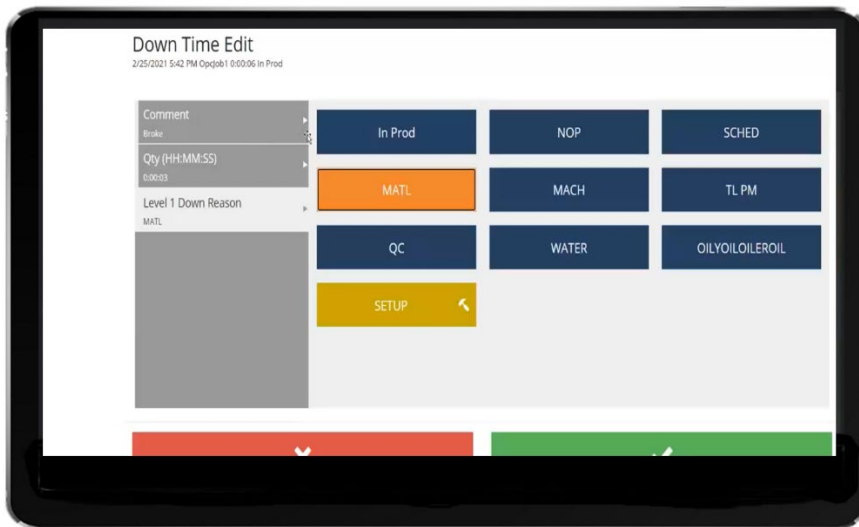
Example of HMI with Down Notes Button



Example of HMI with Down Details and Notes

Downtime Splitting

Through the same downtime notes feature on the HMI we now allow a downtime instance to be split after the original event into multiple down reasons. An example might be where you had 1 hour of downtime classified as down due to Quality and you want to split that into 25 minutes due to Quality and 35 minutes due to material.



Example of HMI showing the screen where downtime can be split. Not the time field which you can change.

Reclassification of Downtime

This enhancement allows you to change a downtime reason. An example might be where your operator has misclassified a downtime instance or where the cause was originally unknown.

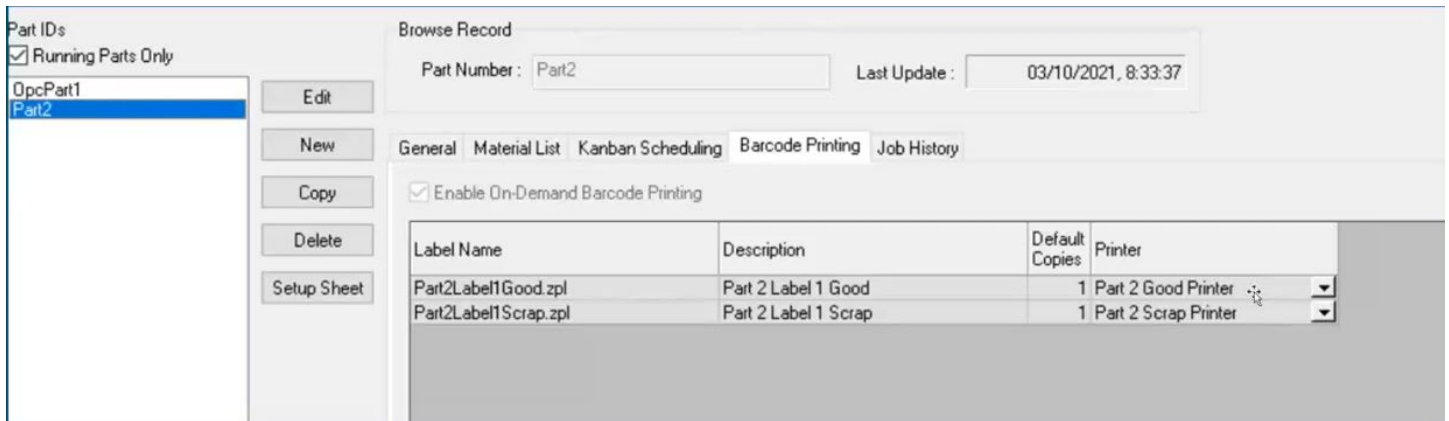
Moving of Websites

Previously all Advanced MES websites were listed under a unique advanced MES web path (example – http://mattec.client.services). This meant that in the past for each website a host entry would need to be created for clients to locate the website. Moving forward Advanced MES websites will be installed in a virtual path under the default website (example – http://<server>/AdvMes/mattec.client.services) which means that clients only need to specify the server name which is generally available via DNS. This also means that there will now be one IIS log file instead of multiple which should make it easier to find issues.

After upgrading to 8.3.3 the old websites will still exist. It will be up to the customer and the service team when those will be removed.

Automatic Printer Selection Based on Label Type

This enhancement allows you to optionally define which printer by machine a label type should be automatically printed to. An example might be where you are printing a good production label and a scrap label. Perhaps the scrap label uses different colored label stock, so you wish it to print to a special scrap printer.



Example of a different label printer being setup for good and scrap

Automatic Scrap Tracking

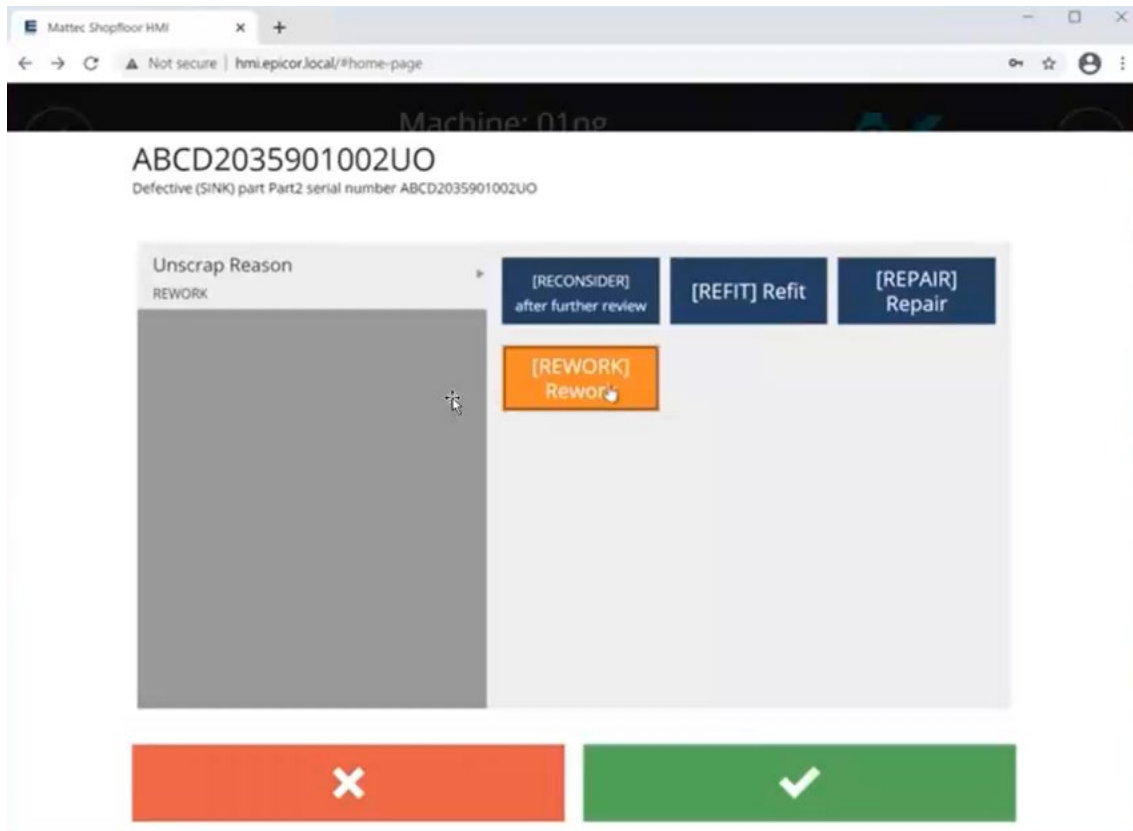
Advanced MES has a feature that can automatically scrap parts if it is outside defined process parameters. Advanced MES now allows you to differentiate between automatically generated scrap and manually generated scrap. Automatic scrap tracking will track time and quantity while in Automatic scrap tracking mode. There have been 4 Real Time Display fields added for the job and shift production categories- Runtime, WtRuntime, Qty and WtQty. New reports have been added to support this new feature.



Example of RTD showing some new Auto-scrap fields

Scrap Reversal by UID

In a previous release, we added capabilities around serial numbers and license plating, and in this release, we extended the capabilities to allow a part that has been scrapped with a serial number to have that scrap action be reversed.



Example of a UID being selected for scrap reversal

New SSRS reports

Reports have been added for auto scrap for job and shift

Bug Fix Summary



In addition to the new features there were also a number of bug fixes that were addressed in this release. It is possible that some of these features are available via a patch to a previous version, but all are included in Epicor Advanced MES 8.2.3.

- ▶ [MES-738] – Fixed issue where when language is changed from the maintenance manager it was not always working
- ▶ [MES-727] – Fixed issue where down time reason count was not updating in Time-Count section for the SSRS Shift Daily Downtime Report
- ▶ [MES-724] – Fixed issue where the last option in Advanced Settings was not visible in the General Tab under Launch Job Schedule>Tools>Options
- ▶ [MES-721] – Fixed issue where Text and graph were overlapping in SPC/SQC Charts tab under Pro Stat section of the Web HMI

Advanced MES (Mattec) 8.3.3 Customer Release Summary Guide

- ▶ [MES-717] – Fixed issue where when the language was being changed from the PCMIU was not being reflected properly in some fields
- ▶ [MES-713] – Fixed issue where description was being displayed in the printer list instead of the printer name for barcode label printers
- ▶ [MES-717] – Issue where the language change from the PCMIU wasn't getting properly reflected in some fields has been fixed
- ▶ [MES-477] – fixed issue where removing running jobs from the schedule jobs list wasn't working when the "remove running jobs from Schedule Jobs list" was enabled.
- ▶ [MES-730] – Fixed the issue where incorrect text was being displayed in the About Real Time Display Window
- ▶ [MES-685] – Fixed issue where the detail filter was not updating the latest data for Job and Shift reports
- ▶ [MES-697] – Fixed issue where Unscrap Reason counts were overlapping in the graph for ShiftUnscrapReport and JobUnscrapReport
- ▶ [MES-743] – Fixed issue where Not Found Error is displayed after clicking on Launch HMI Website Icon from Main Menu
- ▶ [MES-707] – Fixed issue where the Create Page functionality under Page Administration is broken on the HMI
- ▶ [MES-710] – Fixed Issue where the Close Icon is improperly displayed under the Create Page of Page Administration in the HMI
- ▶ [MES-478] – Fixed the issue where the functions of copy and create couldn't be saved in the Shift Configuration
- ▶ [MES-673] – Fixed the issue with an error when the job control function was being run
- ▶ [MES-660] – Fixed an issue where a machine was running and counting but the status wouldn't come out of down.
- ▶ [MES-609] – Enhanced the data collection mode DataImportExport to not require case sensitivity
- ▶ [MES-641] – Fixed issue where you could not use system configuration machine edit to assign "Label Default" as a machine's barcode printer

For any questions about the items on this release summary, or to schedule an upgrade, please contact the Advanced MES Support team by email at support.mattec@epicor.com, or by creating a new support case directly in EpicCare at <https://epicorcs.service-now.com/epiccare/>



Encompass Solutions is a business and software consulting firm that specializes in ERP systems, EDI, and Managed Services support for Manufacturers. Serving small and medium-sized businesses since 2001, Encompass has helped modernize operations and automate processes for hundreds of customers across the globe. Whether undertaking full-scale implementation, integration, and renovation of existing systems, Encompass provides a specialized approach to every client's needs. By identifying customer requirements and addressing them with the right solutions, we ensure our clients are equipped to match the pace of Industry.

Contact Us Today: info@encompass-inc.com | www.encompass-inc.com

The contents of this document are for informational purposes only and are subject to change without notice. Epicor Software Corporation makes no guarantee, representations or warranties with regard to the enclosed information and specifically disclaims, to the full extent of the law, any applicable implied warranties, such as fitness for a particular purpose, merchantability, satisfactory quality or reasonable skill and care. This document and its contents, including the viewpoints, testimonials, dates and functional content expressed herein are believed to be accurate as of its date of publication, 6/10/2021. Use of Epicor products and services are subject to a master customer or similar agreement. Usage of the solution(s) described in this document with other Epicor software or third-party products may require the purchase of licenses for such other products. Epicor and the Epicor logo are registered trademarks of Epicor Software Corporation in the United States, and in certain other countries and/or the EU. Microsoft and Azure are registered trademarks of Microsoft Corporation in the United States and/or other countries. Copyright © 2021 Epicor Software Corporation. All rights reserved.